

## Communication and Language & Literacy

RWInc. Sessions:

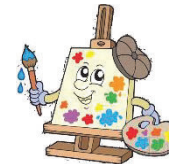
- learn to read and write Set 1 Sounds (using lowercase letters)
- To make CVC words with magnetic letters, to read and write CVC words.

### Primary Writing Project

- Storytelling, re-telling with actions, role play and mark making activities using the stimulus of Primary Writing Project focus texts. Texts include: Shark in the Park, Owl Babies, Peter Rabbit, Charlie's Walk,
- Reading Pie Corbett Reading and Poetry Spine books and other linked texts: Rosie's Walk, Good night Moon, Sharing a Shell, Wow Said the Owl, The Gruffalo, Treasury of Songs,
- Sentence, story and spelling games.

## Expressive arts and design

- 'Dot Week' art work.
- Learning Autumnal songs
- Learning action songs
- Creating leaf pictures
- 'Land Art' with autumnal resources
- Studying the works of Klee, Goldsworthy and Hundertwasser
- Christmas decoration crafts
- Christmas songs
- Art and craft activities linked to a Set 1 Sound eg: paper plate pirates for 'p'. / colour mixing for 'c'
- Learning about musical instruments linked to Set 1 sounds eg: piano for 'p'



**Reception  
Autumn 2019**  
**'I spy with my little eye...'**



## Maths

- Number and place value
- Sorting objects into groups
- Introducing Numicon
- Comparing quantities
- Counting, number and shape spotting walks
- Finding one more / one less than a given number.
- Counting objects and actions
- Repeating patterns
- Measuring length
- Learning about time, our daily routines and learning the days of the week.
- Using positional language during the day when organising the children.



## Physical development

### Malleable materials activities

Jelly, dough, shaving foam.

### Fine motor activities

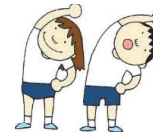
Daily funky finger activities including threading and lacing, using tweezers and pipettes, nuts and bolts, magnetic activities, Dough Disco sessions.

### Health and Self Care

Encouraging independence at snack time, at the toilets, dressing for PE and for the outdoors. Hand washing activities. Teeth hygiene.

### PE sessions (Thursday mornings)

Warm ups and cool downs and discussion of why they are important. Jungle Journey programme working on gross motor skills. Jungle Journeys Gross Motor Programme.



## On going daily activities:

Child initiated learning using the indoor and outdoor provision; areas include: sand, water, large and small block play, cut and stick, role play, dressing up, small world, painting, book areas, puppet show, investigation station, writing area, maths area, wheeled vehicles, climbing frames etc...

## Understanding of the world



- Looking after the class tortoise
- Autumn discovery walks
- Finding out about animals that hibernate.
- Learn about different types of animals, eg: reptiles, mammals
- Harvest
- Cooking and baking items for snacks and discussing the effects of heating / cooling
- Finding out about hot and cold environments and features such as volcanoes.
- Making predictions and conducting science investigations: floating and sinking, testing materials, mixing materials, springs, magnets
- Giving instructions to Beebots
- Looking after our environment, recycling and composting.

## PSED

- PSHE sessions using the 'Jigsaw' programme - completing the units 'Being Me in My World' and 'Celebrating Difference' with Jigsaw Jennie.
- Class stories based around new beginnings, sharing and making friends.
- Learning about Harvest Festival (end of September) using the book 'A Wet and Windy Harvest.'
- Finding out about religious traditions and celebrations for Advent and Christmas, Hanukah (2<sup>nd</sup>-10 Dec) and Diwali (7 Nov 2018).

## Visits/Events:

Trip to Clara Vale Nature Reserve  
Christmas Theatre Visit  
Christmas 'Stay and Play'  
Nativity Play