

Savannah biome



Quick summary

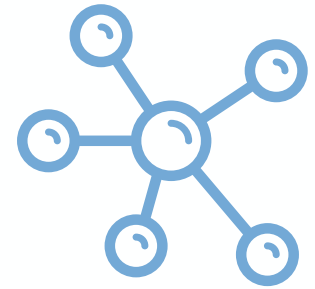


A savannah is a rolling grassland scattered with shrubs and isolated trees. The savannah biome is an area that has a very dry season and then a very wet season. (In British English it is spelled 'savannah' but in most other English-speaking countries it is spelled 'savanna'). Tourism is popular, especially in areas such as the Serengeti National Park in Tanzania.

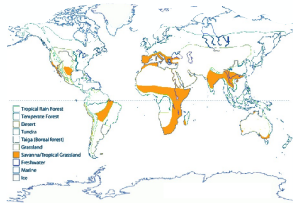


Vocabulary

sporadic: only in a few places
roaming: wandering around
grazing: grass-eating
desertification: becoming like a desert
abundant: more than enough
carnivorous: meat-eating
predators: animals that hunt other animals



Location



The largest part of the savannah biome is located in **Africa**. The Serengeti plains of Tanzania in Africa are probably the best known African savannah. Other areas are found in **North America** and the North and East of **South America** (Brazil).



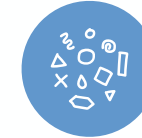
Physical features

The savannah is warm all year long. It is mostly made up of grass but there are sporadic trees. Although there are various types of soil in the savannah biome, it is not suitable for farming. Water holes provide drinking water for roaming animals.



Human processes

Savannah areas are popular with nomads, e.g. the Maasai tribe of Kenya. This method of farming can be beneficial to the environment. Grazing animals are moved from place to place, allowing vegetation to recover. However, desertification can result from poorly managed farming in the savannah. Areas of desert are created by the destruction of natural vegetation. Causes of desertification include: removal of vegetation cover by overgrazing and uncontrolled wood collection for fuel.



Diversity

Because of the availability of grass in the savannah, there are many herbivores, such as elephants, zebras, gazelles and buffalo, who take advantage of this abundant food supply. Herbivores have developed traits, such as being fast, large or tall, which help them escape carnivorous predators, e.g. lions. The savannah biome has a long dry season so plants there have adapted to this climate.



Location



Physical features



Human features



Diversity



Physical processes



Human processes



Techniques