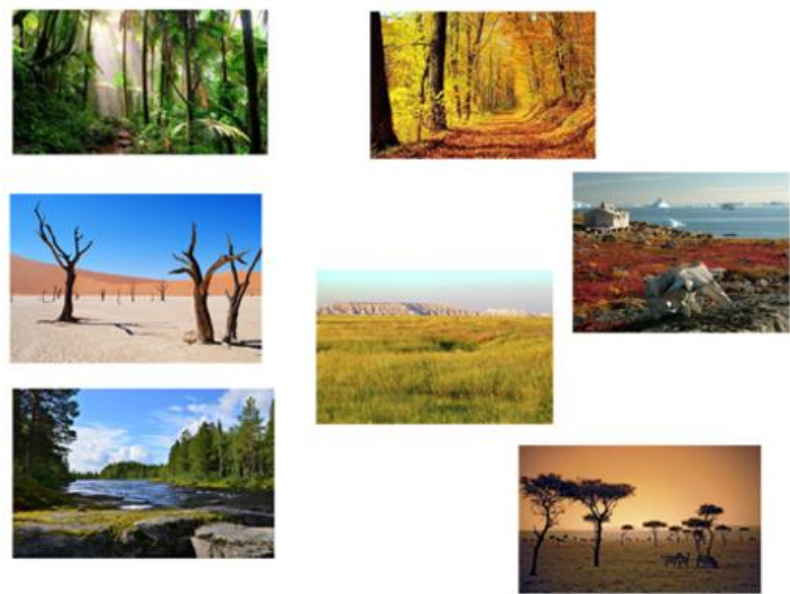


LO: To compare and contrast biomes



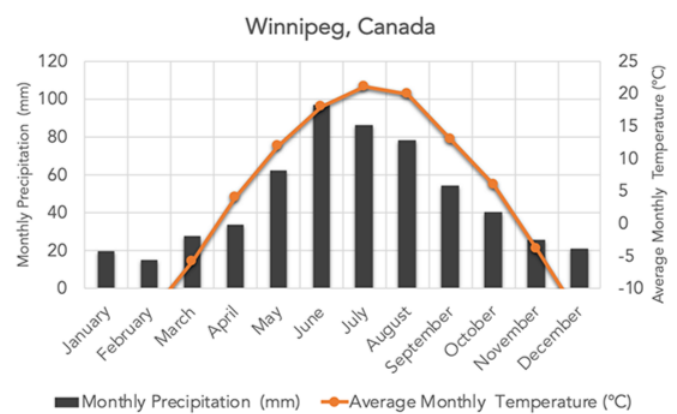
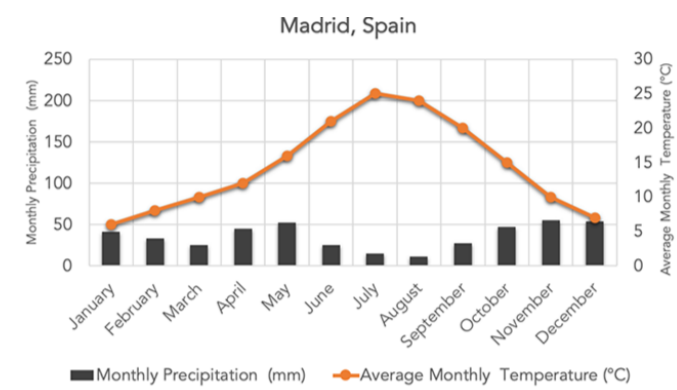
What is a biome?

Biomes are categorised by four things. They are _____, _____, _____ and _____.

The two types of biomes are _____ and _____.

Two facts about a Taiga biome:

Use the two climographs below to compare and contrast the climates of a city in a taiga biome and a city in a temperate deciduous biome.



	Madrid (Temperate Deciduous)		Winnipeg (Taiga)	
	Month	Value	Month	Value
Temperature high (degrees Celsius)				
Temperature low (degrees Celsius)				
Precipitation high (mm)				
Precipitation low (mm)				