

- $$320 + 719 = 1,039$$

Circle the subtractions that can be used to check Ron's addition.

1,039 – 719

320 – 1,039

719 – 320

1,039 – 320

- $$4,096 - 2,356 = 1,740$$

Circle the addition that can be used to check Dora's subtraction.

$$4,096 + 2,356$$

$$4,096 + 1,740$$

$$1,740 + 2,356$$

$$1,740 + 4,096$$

- [illegible]

- [illegible]

- $$\begin{array}{r} 12350 \\ + 7903 \\ \hline 91380 \end{array}$$

Tommy checks his calculation using the same addition.

Is this a good idea? Talk about it with a partner.

What calculation should he do? Correct Tommy's answer.

A 10x5 grid with a black rectangle in the bottom right corner. The rectangle is 2 units wide and 1 unit high, located in the bottom right corner of the grid.

5

$$2,482 + 6,428 = 8,912$$

$$5,271 + 4,212 = 9,483$$

$$5,984 - 3,172 = 2,812$$

$$8,912 - 6,428 = 2,482$$

$$9,483 - 5,271 = 4,212$$

$$8,912 - 5,271 = 3,641$$

$$8,912 = 3,641 + 5,271$$

$$5,984 = 3,172 + 2,812$$

6

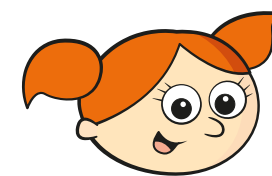
Use inverse operations to check your answers.

a) $763 + 4,072 =$

b) $8,711 - 1,053 =$

c) $2,351 + 14,706 =$

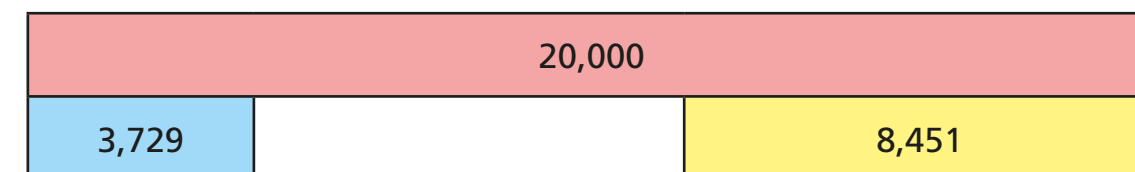
7



When I add
4,550 to my number
I get 7,460

What number did Alex start with?

8



Think of two different ways that you can find the missing part.

What is the missing part?
