

Virtual Sustainable Easter Egg Hunt

Recycling in Gateshead

Discover your Virtual Easter
Eggs.....Recover your
waste



Task:

- Work out the place name, person or clue and take the first letter of each answer to give you your final destination which is a location in our region.
- As you solve each clue you will be given a virtual Easter egg. You need to collect the Easter egg waste wrapping from each egg (some have more waste than others depending on how hard the clue is!
- Use the waste information given to add up how much Easter Egg waste you can drop off at your final location and stop from going to energy from waste.
- Recycle more.....feel great!!
- Get some ideas for Easter themed boxes and artwork to help you Go Green this Easter.

For every clue you solve,
you will win a Virtual
Easter Egg worth a
certain weight, as you
can see in the example



YOU ARE GRANTED 1

**Virtual Easter Egg
worth 400g**



What is the name of the place where you will find these buildings and sculptures?



What is the name of the structure completed by Anthony Gormley 1998 that stands tall and looks over Gateshead?



Clue

I cover 190,000metres squared and if you walked in front of every shop you would walk 3.5miles. You might buy a new pair of jeans or a toy or really anything you can think of!!



Clue



Clue

What is the name of this monument?

I come to life with cheers from the crowd, when athletes from all over the world run on my track.



Clue

competitions here...

Where would you find
me?



Clue

In 1640 Stella Hall was headquarters for the English army at the Battle of Newburn Ford.

This battle was one of the triggers for the second Bishops Wars (English Civil War) and in 1651 the hall was stayed in by _____ Cromwell.



Clue



The former pit-head baths at Clara Vale.
The Three local pits, Emma, Clara and Stella were all shaft mines which means the mining took place _____



Clue



Clue

What is the name of this building?



Tyne _____

Part of big local industry in the 1930's.

Clue

I am a _____ which was built to carry a railway over the River Wear in Washington.

I was completed the year Queen Victoria was coronated. I am named after her.

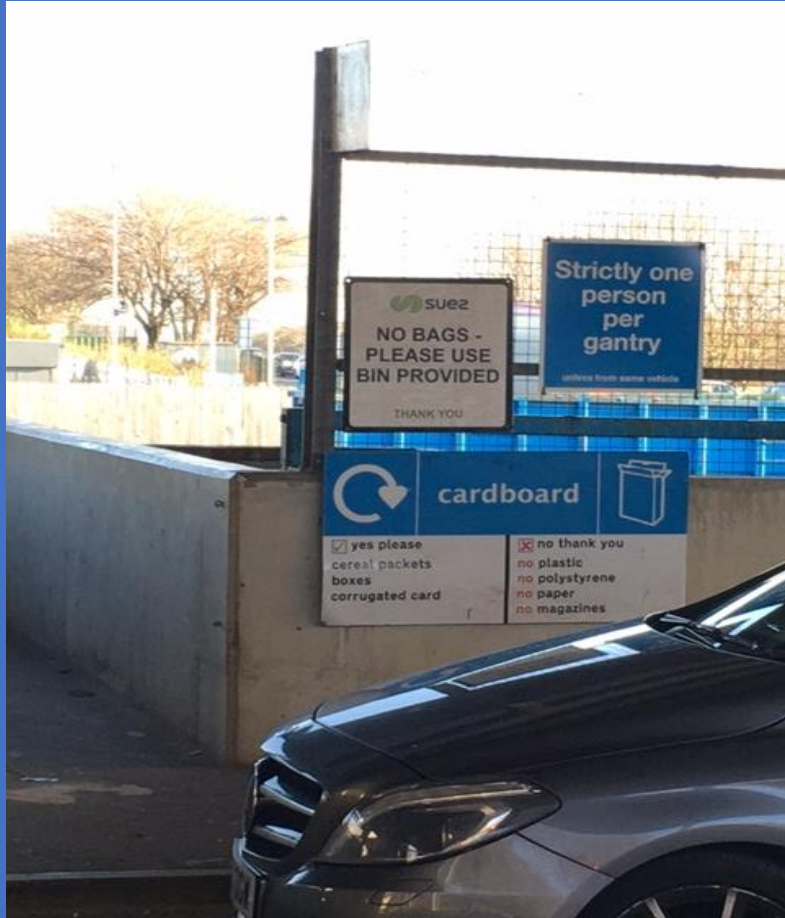


Clue



What is the name of the mining pit that our school is named after?

Clue



Clue

An HWRC (Household Waste Recycling Centre) can be found here

Answers:

Clue Number	Answer	Take letter	Value of Easter Egg Weight
1	Crawcrook	C	400g
2	Angel of the North	A	200g
3	Metro Centre	M	200g
4	Penshaw Monument	P	400g
5	Gateshead International Stadium	G	400g
6	Ryton	R	200g
7	Oliver Cromwell	O	200g
8	Underground	U	1000g
9	National Glass Museum	N	200g
10	Dock	D	400g
11	Victoria Viaduct	V	400g
12	Emma Pit	E	200g
13	Campground	C	400g
Final Location = Campground VEC (visitor and education centre)			
TOTAL WEIGHT FOR ALL CORRECT ANSWERS			4600g

Check which answers you got correct.

For each correct answer, record the weight of each Easter Egg you have won.

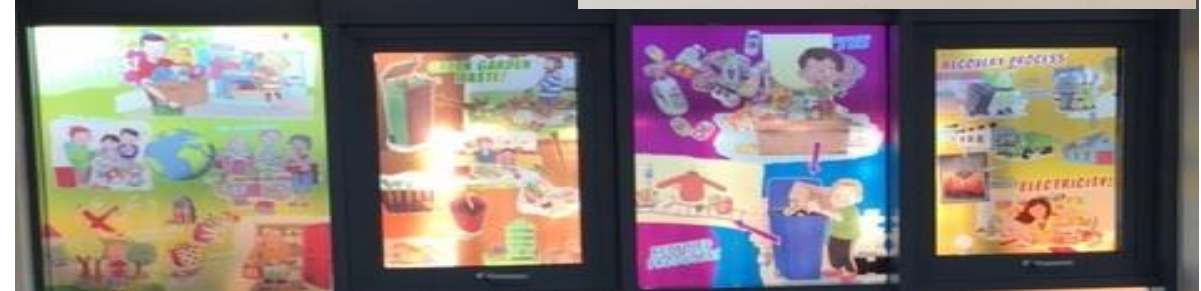
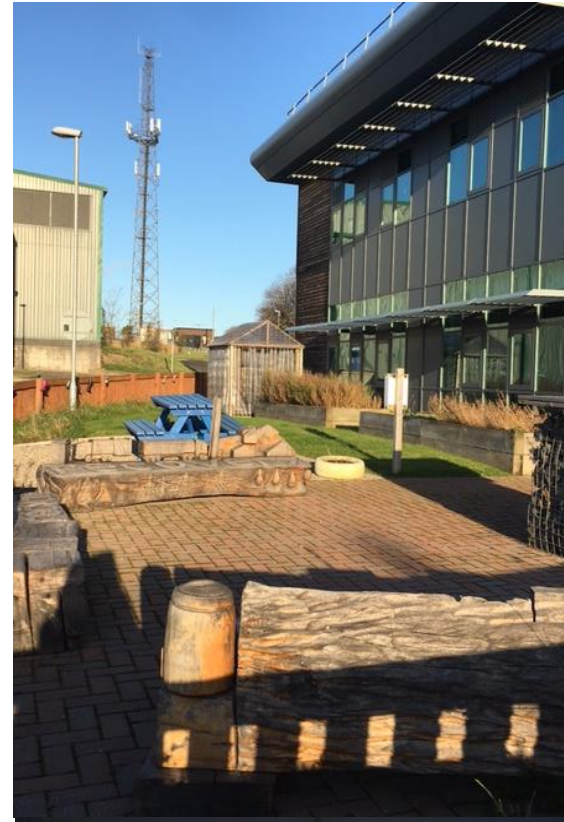
Add up all your winning Easter Egg weights together, including your bonus points

How much Easter Egg waste did you stop from going to energy from waste?

You have reached your destination:

CAMPGROUND VEC

(Visitor and Education Centre)





We now have one last challenge for you, so that you can win some bonus waste!

Apart from Easter Egg waste packaging, can you name 10 items that can be recycled at the HWRC?

You get 200g extra for every item you can name, so a possible 2000g!

Items that can be recycled at the HWRC

- Paper
- Cardboard
- Plastic
- Small Electrical and Electronic items e.g. hairdryers. Washing machines, toaster, TV's etc.
- Glass bottles
- Drinks cans and aerosols
- Fluorescent tubes
- Batteries
- Leaves
- Flowers
- Soil
- Twigs and garden waste
- Rubble
- Car Tyres
- Gas bottles
- Shoes
- Mixed Textiles
- Wood
- Used engine oil

If you got all the
answers correct and
named 10 bonus
items, here is
your winning
Golden Egg!



**13 correct answers 4600g
plus 2000g bonus, so 6600g
all stopped from going to
energy from waste
Congratulations!**

Recycling in Gateshead

- Instead of throwing away could you...
- making use of retailer take-back services
- giving away items on reuse websites such as [Freecycle](#) and [Freegle](#) or on local social media groups
- checking the [Reuse Network](#) to see if small businesses or charities in your area can mend or repurpose your furniture and appliances instead.
- using a private registered waste collection company, although there will be a cost if you do this and you should make sure the person collecting your waste is on the [Environment Agency register](#).



Recycling in Gateshead

What goes in the bin?!

Are you getting your recycling right? Watch this video to find out

<https://www.gateshead.gov.uk/article/3145/Recycling-bin>

- **Easter is coming up...**
- Remember to check your Easter Egg packaging and recycle as much of the cardboard as possible. Remember you can also recycle the plastic trays from eggs and chocolate boxes in your blue bin if they are not black plastic.
- Foil should be scrunched into a ball.



Recycling in Gateshead

- **What times of year are key to recycling?**
- Birthdays
- Easter
- Christmas
- **Did you know not all wrapping paper can be recycled?**
- Before **recycling**, remove any sticky tape and decorations such as ribbons and bows as these cannot be recycled.
- **Wrapping paper** can only be recycled if it passes the scrunch test - simple **paper wrapping** can be recycled but foil or glitter-decorated **paper** cannot and needs to go in the general waste.
- Think about using recyclable brown paper for wrapping and decorate it – have a look at these recyclable wrapping paper art ideas 😊



Go Green for Easter...

- Easter is coming up and it's easier than you think to DIY your Easter
- <https://www.recycledevon.org/love-easter-hate-waste> has lots of ideas for making your own Easter treats and gifts.
- How to make an Easter eggs box - <https://www.madeformums.com/toddler-and-preschool/how-to-make-an-easter-egg-box/>



- Bunny gift box - <https://www.youtube.com/watch?v=H2U-J-PGYSY>



- Gift boxes - <https://www.youtube.com/watch?v=9yCcQMhzk-g>

