

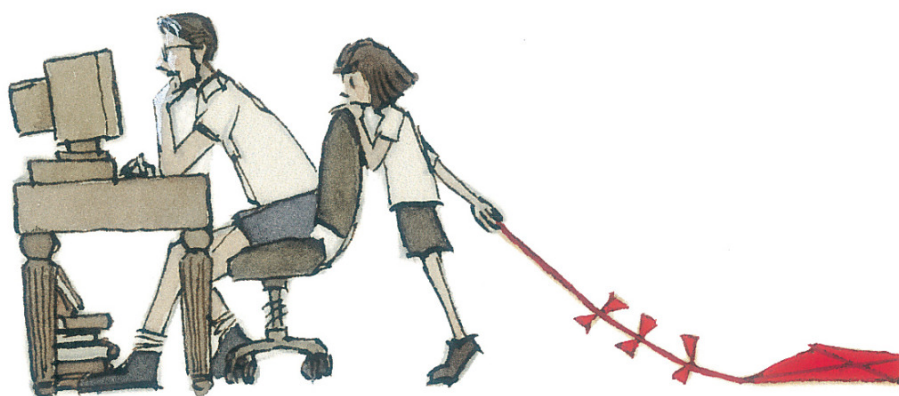
Wednesday 5th January

L.O. To make inferences about a character

**INFERENCE
IS THE PROCESS OF
MAKING AN EDUCATED
GUESS
ABOUT A TEXT BASED
ON THE
CLUES IT PROVIDES,
AND OUR
UNDERSTANDING OF THE
WORLD...**

What do you know?

What do you think you know?



1. What is the dad doing?
2. Why is the girl standing behind him?
3. Why is she dragging a kite on the floor?
4. Has she said anything to him? Does he know she's there?
5. How is she feeling? What is she thinking?
6. Do you think this has happened before? Why/why not?
7. Why is the kite coloured bright red, but everything else is in dull colours?

What do you know?

What do you think you know?



- How are the owls related?
- Which owl is about to take its first flight? How do you know?
- How does the young owl feel about flying?
- What might it be thinking? Add a thought bubble to the picture.
- Is the older owl worried?
- What advice might the older owl give to the younger one?

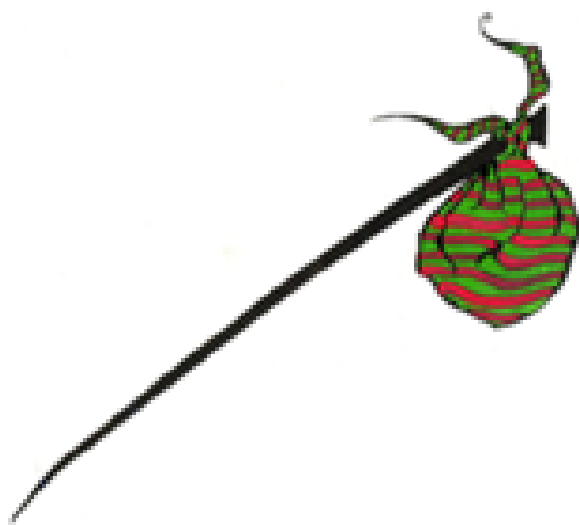


Words and illustrations can tell us a lot about a character without explicitly saying how or what a character is like or how they are feeling.

These images on your table are related to the main character in our new story...

Do these give us any information?
What can we **infer** about the main character?





I infer that the character _____

because_____.



The character has _____

this tells me that _____.



I infer that the character _____

because _____.



The character has _____

this tells me that _____.



I infer that the character _____

because_____.