



This is Sofia Owl, her name means 'wisdom' and she will ask us big questions as we learn RE.

This term our enquiry question is...

*Is it possible to be kind to everyone all of the time?*



What does it mean to be kind?

Who are you kind to?

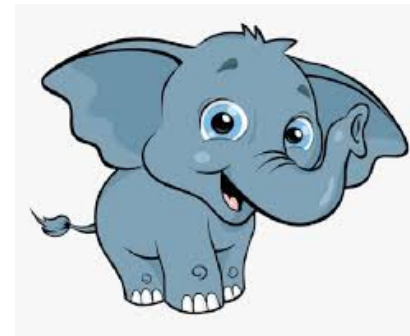
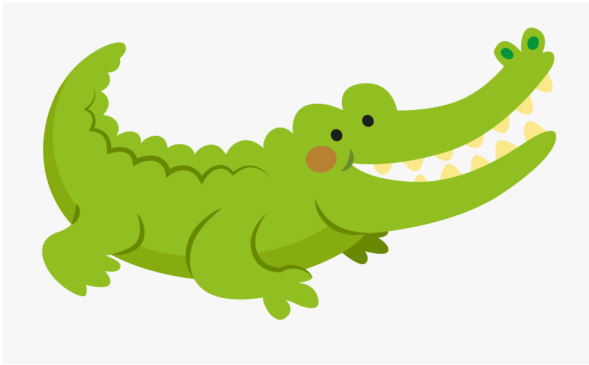
Who is it easy to be kind to?

Do you think you are a kind person?

What makes it tricky for you to be kind?

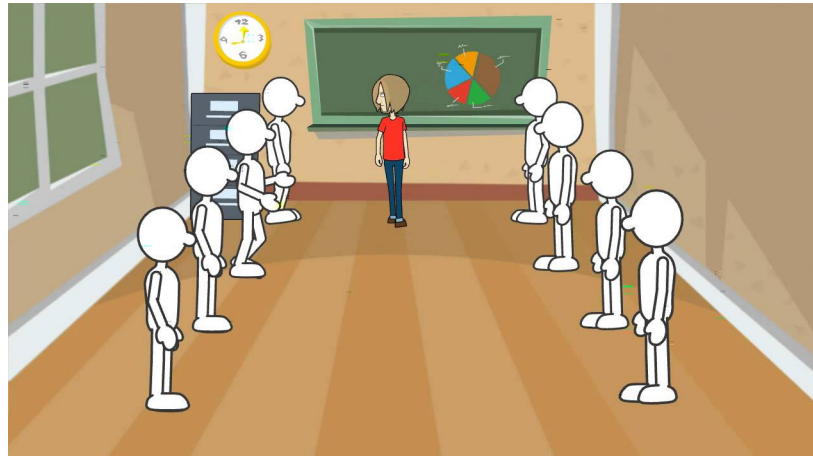
Is it possible to be kind to everyone all of the time?





## Crocodile and Elephant

# Conscience alley



What could/ should elephant have done?

Is it easy to be kind all of the time?



Can you think of an occasion when you were kind to someone even though it was difficult?

