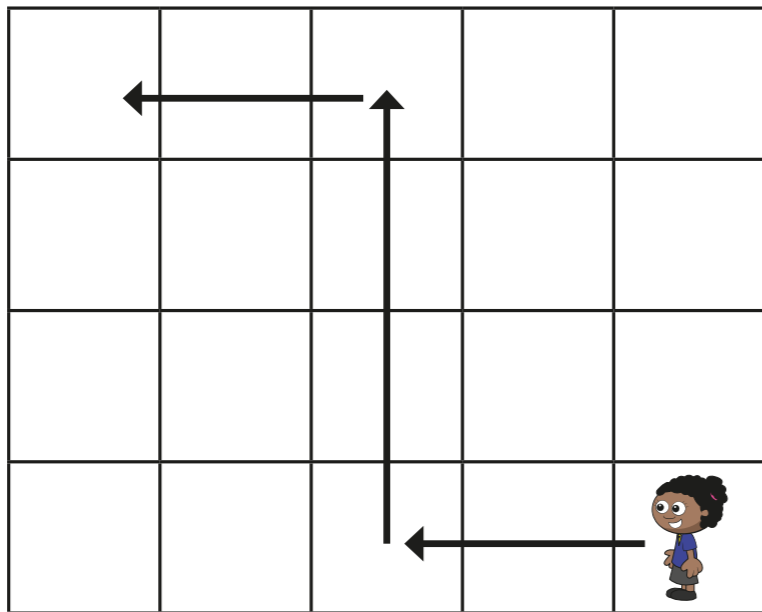


Describing movement and turns

1 Whitney is moving around a grid.



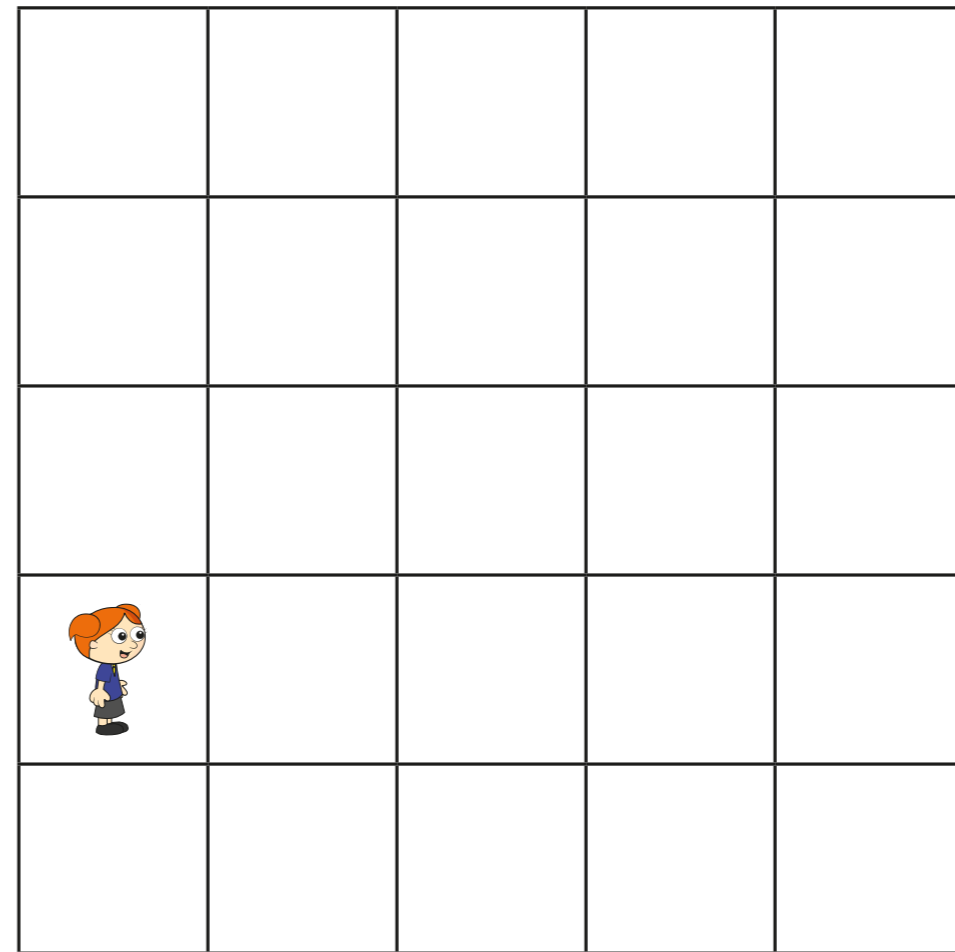
Complete the sentences to describe Whitney's movement.

First, she walks squares forwards.

Then she turns _____ and walks squares forwards.

Then she turns _____ and walks squares forwards.

2 Alex is moving around a grid.



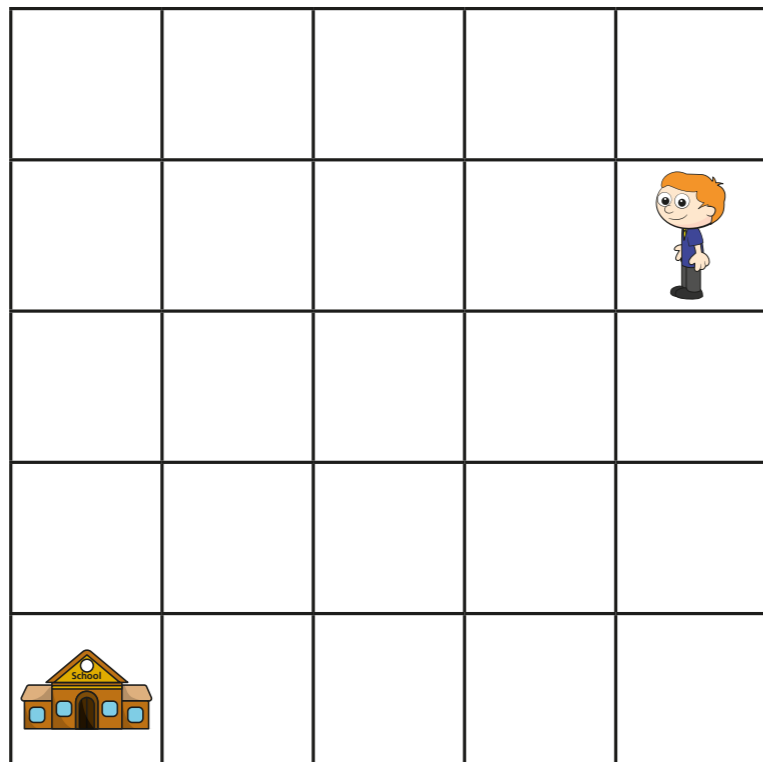
Draw arrows to show her movement.

- First, she walks 2 squares forwards.
- Then, she turns left and walks 3 squares forwards.
- Then she turns right and walks 2 squares forwards.

Could Alex have got there another way?



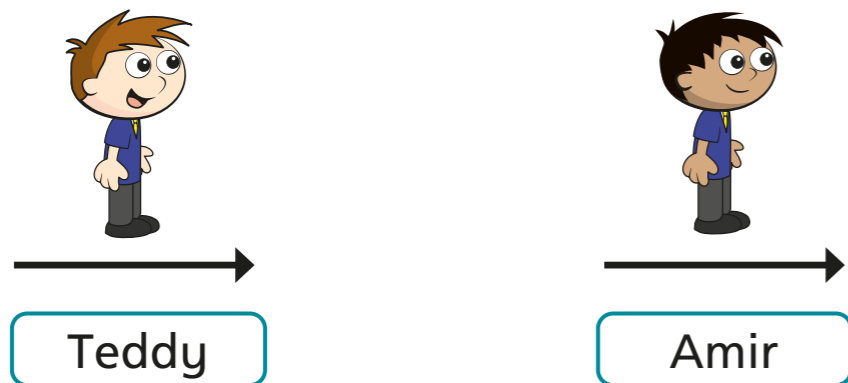
3 Ron is on his way to school.



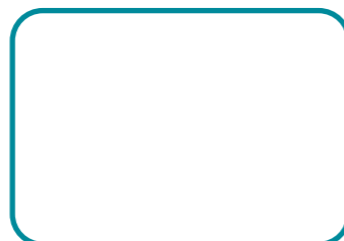
- a) Draw arrows to show the path Ron could take to school.
- b) Describe the path to a partner.
Did you choose the same path for Ron?



4 Teddy and Amir are both facing the same way.



- a) Teddy turns left.
Draw an arrow to show the way he is facing now.



b) Amir turns a quarter turn anticlockwise.

Draw an arrow to show the way he is facing now.



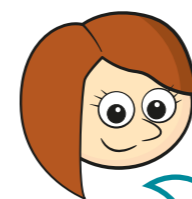
What do you notice?

5 Rosie and Dexter are answering a question.

The sheep moves 2 squares forwards.
Where is the sheep now?

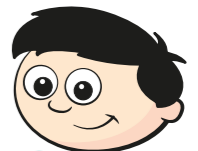
sheep		

Rosie



I know where the sheep is now.

Dexter



It is impossible to answer this.

Who do you agree with? _____

Talk about it with a partner.

