



Monkey Symphony

What do you think the relationship is between the three characters?

What can you infer about their personalities?

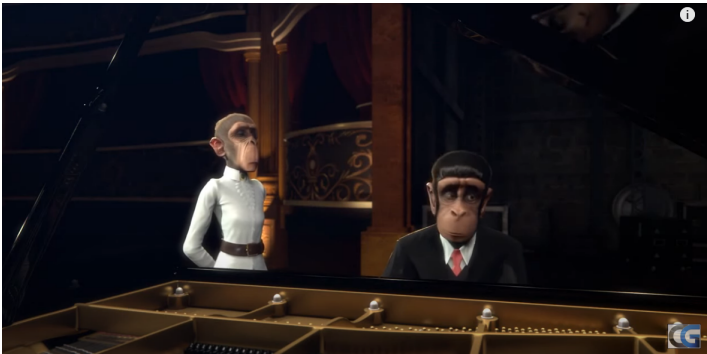
What do you think might happen in the future? How might their lives turn out?



Watch and summarise the story

Retell the story





LO: To understand the main characters

- Create questions for characters
- Answer questions as characters
- Role play characters

Generate questions to ask the main characters. Under each question, leave 4 blank lines (this is where you will write the answers)

- How did you feel when you first saw your brother again at the theatre?
- Why did you quit the lessons?
- If you could change anything about your life, what would it be?
- What happened in your life after you quit the lessons?
- How does music make you feel?
- Why did you treat the children like that?

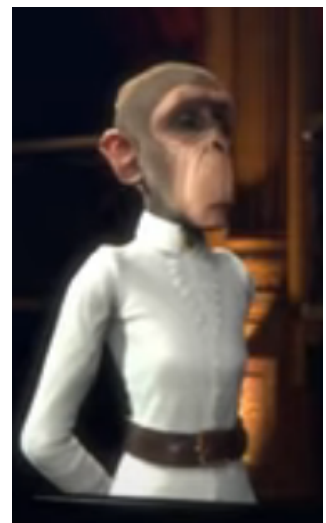
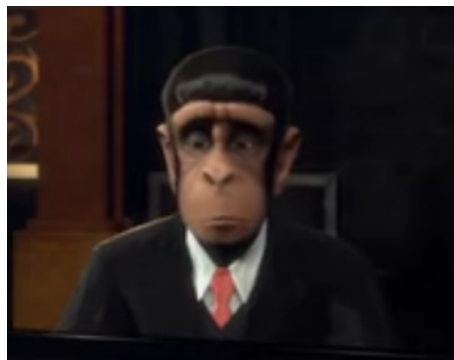
For your questions, write an answer from the point of view of a character. Write the character who is answers brackets.

- How did you feel when you first saw your brother again at the theatre?

(cleaner brother) - It was a shock to the system. We hadn't seen each other for so long and I hadn't realised that he was going to be performing. All I wanted to do was give him a hug and tell him how much I had missed him. But, it did also take me back to that fateful day many years ago.

In threes, role play the three main characters.

Ask and answer the questions in the role of one of the characters.



LO: To understand the main characters

- Create questions for characters
- Answer questions as characters
- Role play characters