



Milestone 1:

- Ask and answer geographical questions (such as: What is this place like? What or who will I see in this place? What do people do in this place?)

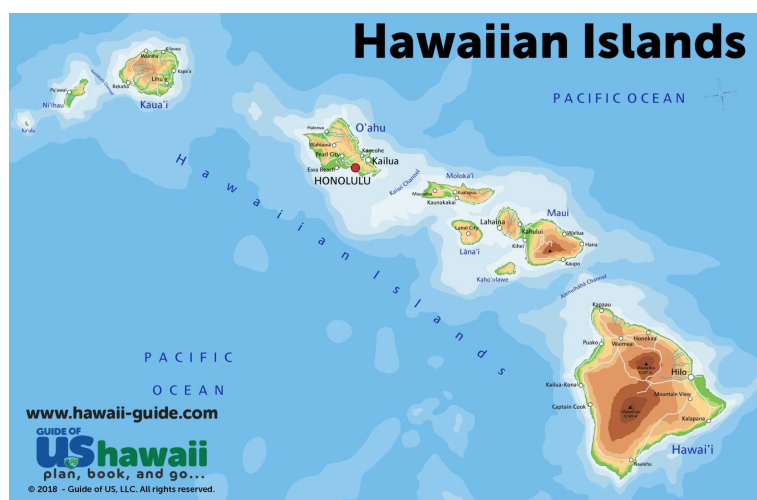


In your atlas, or on Google Earth, find the continent of North America and then find the USA.



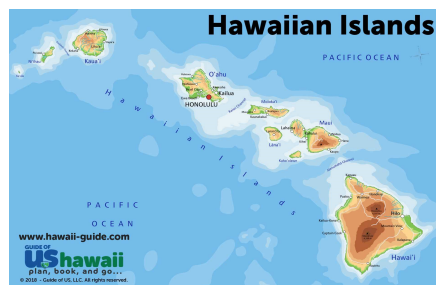
The USA is split into 50 sections known as states. 48 of these are all on the mainland, but 2 are separate - Hawaii and Alaska.

What do you notice about Hawaii?



Hawaii is made up of 8 main islands in the Pacific Ocean.

These islands are: Hawaii (also known as The Big Island), Maui, Oahu, Molokai, Kauai, Lanai, Kahoolawe and Niihau.



Each island is the
very top of a
mountain under
the sea.

Honolulu is the
state capital,
which is located
on the island of
Oahu.

Let's mark Hawaii on the map of the world.



Quick Island Facts

Kahoolawe: The smallest of the islands with no permanent residents.

Niihau: Although this island is privately owned, tours of it are offered to the public.

Lanai: This island is known as the 'Pineapple Island' because of its history of pineapple plantations. There is only one school here.

Molokai: This island is home to the highest sea cliffs in the world.

Kauai: This is known as the 'Garden Isle' and home of Waimea Canyon State Park. To the east of Mount Wai'ale'ale, the intense rainfall has eroded the mountains, creating deep valleys.

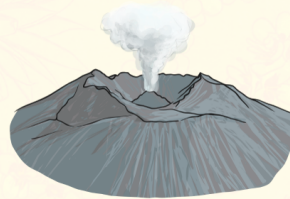


Quick Island Facts

Oahu: This island is home to around 65% of the entire population of the state of Hawaii. Barack Obama was born here.

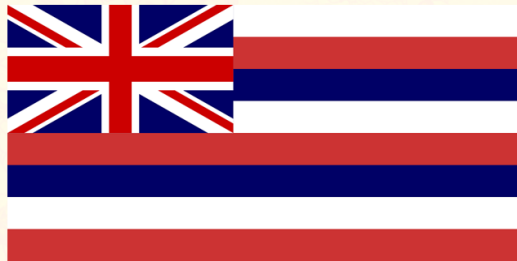
Maui: This is the second largest island. Haleakalā volcano makes up around 75% of the island of Maui. Another volcano, Mauna Kahalawai, can also be found here.

Hawaii Island (The Big Island): Hawaii Island is made up of five volcanoes, three of which are active. One of the active volcanoes, Mauna Loa, is widely considered to be the largest volcano in the world.

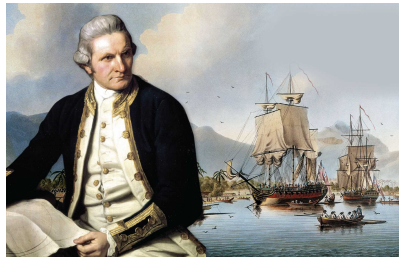


The Flag of the State of Hawaii

The flag of the United Kingdom appears in the top left corner to honour Hawaii's friendship with the UK.



The flag has 8 stripes. What do you think each stripe represents?



Captain James Cook discovered these islands in 1778. Over the next 40 years, adventurers would stop here for supplies.

Weather

Hawaii only has two seasons - summer and winter. Summer starts in May and ends in October. At this time of year, the average temperature in the capital is around 26 degrees.

Winter is the rainy season, which begins in November and lasts until April. The temperature is cooler during these months.

Agriculture is a large part of Hawaii's economy. Pineapple, banana, papaya, coconut, guava, mango and avocado are grown here. These tropical fruits can be grown because of the warm climate. If you are in a shop, perhaps see if you can spot any of these, and if you can, perhaps you could taste one you haven't tried before!

Fruit	☺	☹
Pineapple		
Avocado		
Papaya		
Banana		
Coconut		
Mango		

Traditions

Lei: In Hawaii, a lei is a garland of flowers. These floral necklaces are given to people as a sign of affection.



Luau: This is a traditional Hawaiian party to celebrate special events. There is hula dancing, music and plenty of food. Hawaiian limbo is a popular game.

Hula dancing: Hula dancers traditionally wear grass skirts and leis. The dancing is often accompanied by the ukulele.



We are going to create our own Hawaiian lei.



