

The Mystery of the Missing Medal

The day of the big running race has finally arrived! All the runners have been training hard for months and now at last it's time for the race to begin. All the runners want to win the grand prize, a shiny gold medal.

But, just before the race was due to begin, the race organisers went to get the medals ready and discovered... someone had stolen the gold medal!

As Detective Chief Inspectors on the case, it is **your** job to find out which runner has stolen the gold medal. You have taken down the names and details of all the runners in the race. There are also five important clues to be discovered.

To crack the case, you will need to solve each clue and check the information with the list of names. Will you be able to find out who stole the gold medal before the race is finished?

Good luck!



Race Runners

First Name	Surname	Shoe Size	Hair Colour	Eye Colour
Fred	Smith	8	brown	blue
Mariam	Hamza	7	black	brown
Angel	Roberts	6	black	grey
Nicolas	Besson	11	blonde	brown
Chen	Yu	8	brown	blue
Nadeem	Dar	7	black	brown
Chloe	York	5	brown	blue
Keith	Bexley	10	ginger	green
Keiko	Yamanda	8	black	brown
Luke	Wild	8	brown	blue
Jo	Wright	7	black	grey
Josh	Tooley	12	brown	green
Finn	Daniels	10	blonde	blue
Stella	Edward	6	ginger	blue
Alfie	Green	8	brown	blue
Aisha	Patel	6	brown	blue
Claire	White	8	brown	blue
May	Eadie	4	brown	blue
Destiny	Robinson	6	black	grey
Ibrahim	Zia	6	brown	green

Clue 1 Capitalise the Clue!

At the scene of the crime, a note has been found. It has been written by the runner who stole the medal! The thief must have been in such a rush they forgot to use any capital letters. Can you underline the letters that should be capitals (at the beginning of sentences and for names of people, places, and days of the week)? Write out the capitals that should be in the note. Rearrange the letters to spell the colour of the thief's hair.



The letters I have changed to capitals are:

The medal was stolen by someone with _____ hair.

Clue 2 A Lucky Card Clue

A 'Good Luck' card has been found at the scene of the crime. The runner must have dropped it as they were stealing the medal! On the card is a poem. The poem is missing punctuation! Can you write the sentences in the correct place in the table, with the correct punctuation added? The sentence form that has been used the **most** will tell you the thief's eye colour.

Are all the runners ready
Excitement fills the air

Get on your marks and get set
I hope it will be fair

You all are fast and fighting fit
Who will be the star

Go out there and win the race
What a great runner you are

**Question
Sentence (?)**
(Green Eyes)

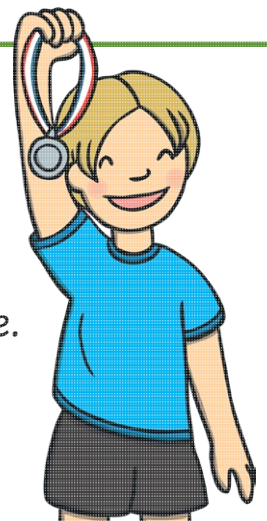
**Command
Sentence (.)**
(Grey Eyes)

**Statement
Sentence (.)**
(Blue Eyes)

**Exclamation
Sentence (!)**
(Brown Eyes)

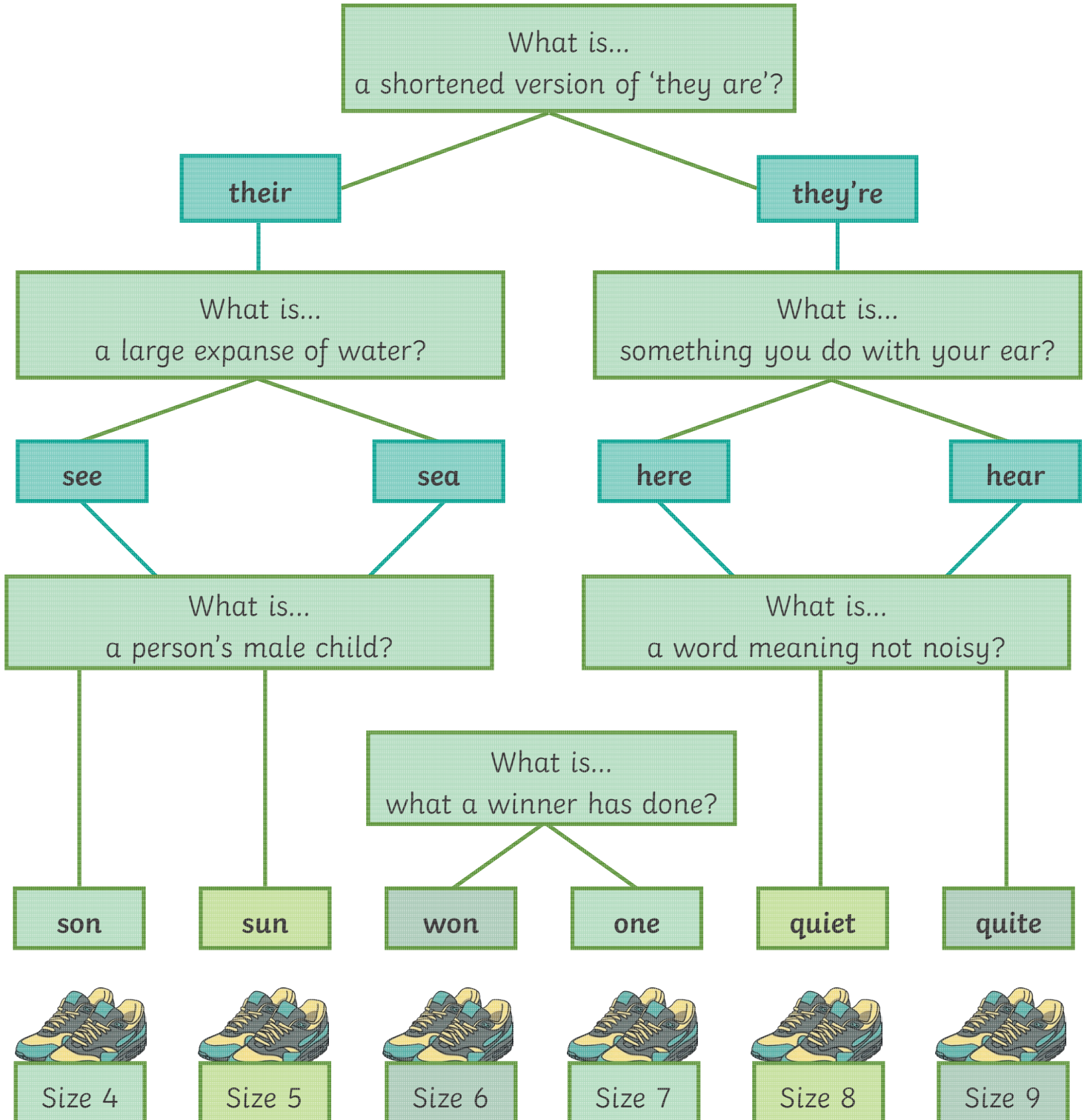
The sentence that has been used the most is a _____ sentence.

The medal was stolen by someone with _____ eyes.



Clue 3 A Running Shoe Trail

Footprints have been discovered at the scene of the crime! Follow the footprints, answering the homophone questions, to lead to the shoe size of the runner who stole the medal. A homophone is a name for words that sound the same but have two different spellings and meanings.



The medal was stolen by someone with size _____ shoes.

Clue 4 Common Exception Cups

You go to look for clues in the trophy room. Each trophy has a picture of a common exception word on it. Can you spell the words on the cups correctly? The letters in the boxes spell out a clue about the medal thief's surname!



The medal thief's surname is a _____.

Clue 5 Fast-er and Fast-est Runners

The race is nearly over so hopefully you have nearly caught the thief! For your final clue, look at where the runners are in the race and then complete the words in the sentences, using the suffix -er or -est. Fill in the table to reveal a final clue about the medal thief's first name.



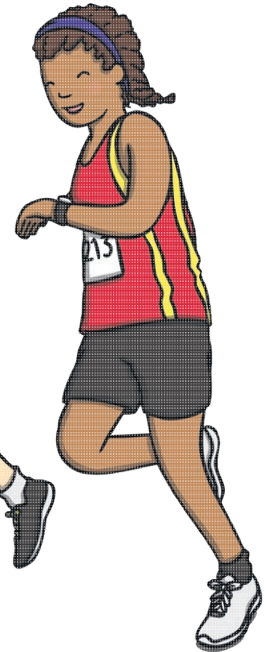
Amy



Amena



Sam



Trish

Suffix	Number of times used
-er (first name begins with C)	
-est (first name begins with A)	

Amy is the fast___ runner.

Amena is fast___ than Sam.

Trish is the slow___ runner.

Sam is fast___ than Trish.

Trish is slow___ than Amena and Sam.

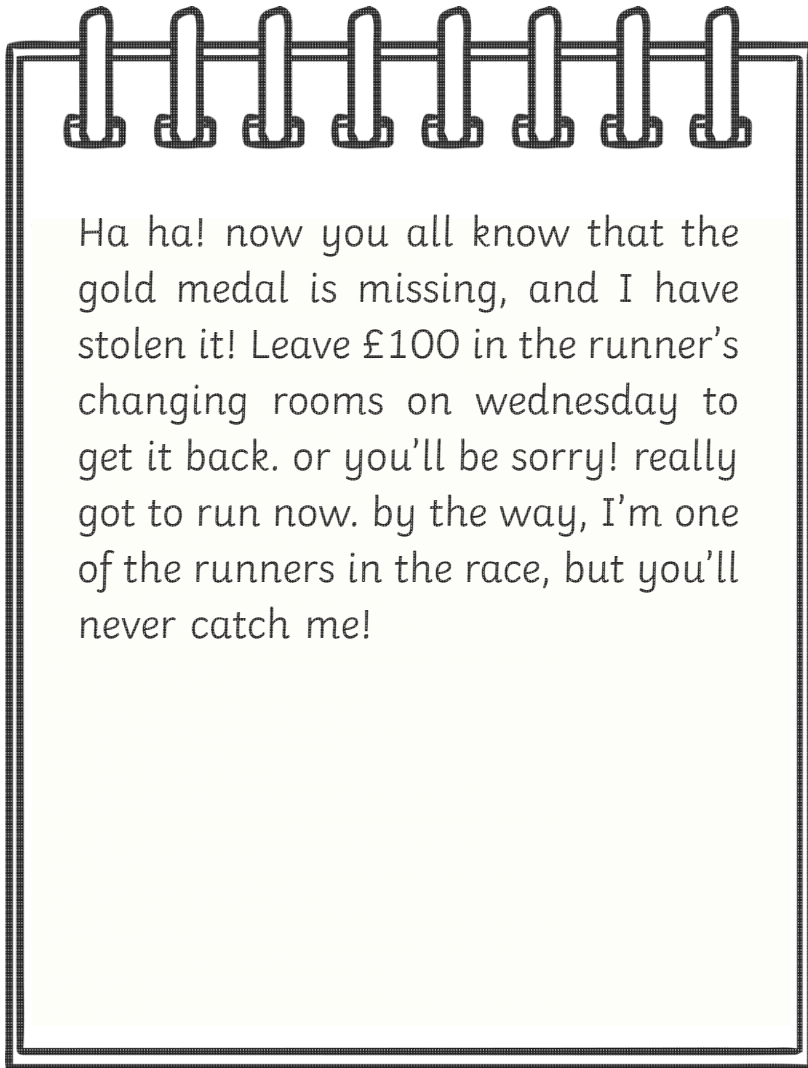
Amy is fast___ than Amena.

The suffix that has been used the most is _____.

The medal thief's first name begins with _____.

The Mystery of the Missing Medal **Answer Sheet**

Clue 1 – Capitalise the Clue!



The letters I have changed to capitals are:

N W O R B

The medal was stolen by someone with **brown** hair.

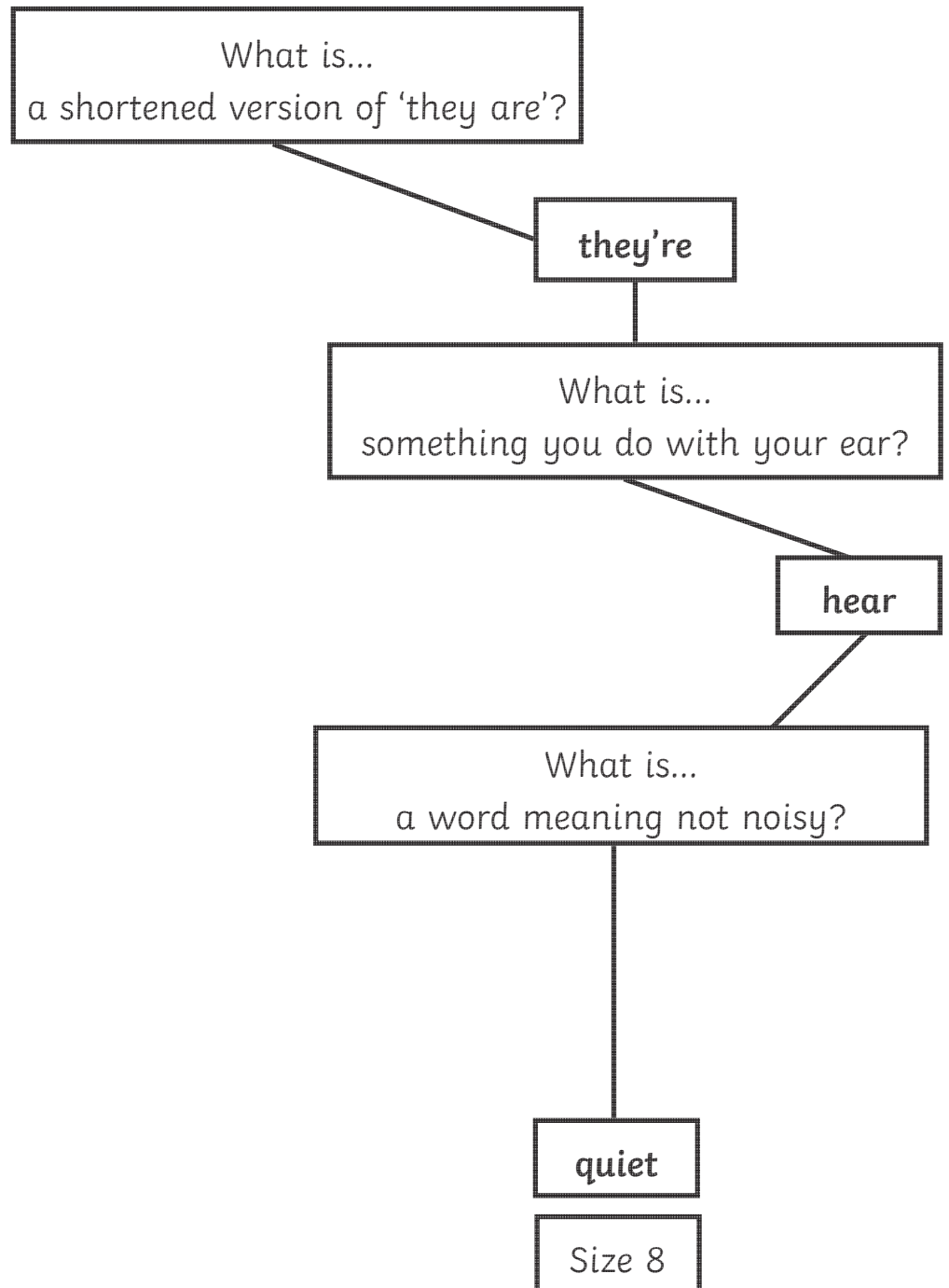
Clue 2 – A Lucky Card Clue

Question Sentence (?) (Green Eyes)	Are all the runners ready? Who will be the star?
Command Sentence (.) (Grey Eyes)	Get on your marks and get set. Go out there and win the race.
Statement Sentence (.) (Blue Eyes)	The runners are all ready. Excitement fills the air. I hope it will be fair. You all are fast and fighting fit.
Exclamation Sentence (!) (Brown Eyes)	What a great runner you are!

The sentence that has been used the most is a **statement sentence**.

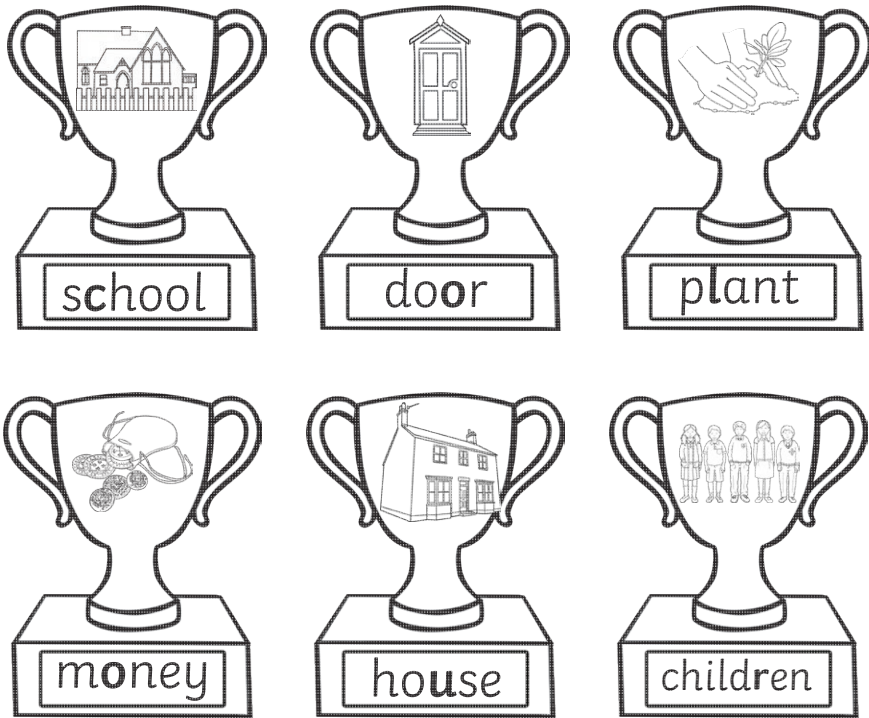
The medal was stolen by someone with **blue** eyes.

Clue 3 – A Running Shoe Trail



The medal was stolen by someone with size **8** shoes.

Clue 4 – Common Exception Cups



The medal thief's surname is a colour.

Clue 5 – Fast-er and Fast-est Runners

Amy is the **fastest** runner.

Amena is **faster** than Sam.

Trish is the **slowest** runner.

Sam is **faster** than Trish.

Trish is **slower** than Amena and Sam.

Amy is **faster** than Amena.

Suffix	Number of times used
-er (first name begins with C)	5
-est (first name begins with A)	2

The suffix that has been used the most is **-er**.

The medal thief's first name begins with **C**.

The medal was stolen by **Claire White**.